

# CGA LICENCED PREMISES

© 2024 CACI Limited and all other applicable third party notices (CGA) can be found at [www.caci.co.uk/copyrightnotices.pdf](http://www.caci.co.uk/copyrightnotices.pdf)

Area: P03968\_Lodge, Dukinfield, SK16 5JY (1 Mile)  
 Base: Great Britain  
 Year: 2023

Licence Type	Profile	Per 1000 Pop (Area)	Per 1000 Pop (Base)	Index	0	100	200
Pubs & Full On	37	113.7	81.7	139			
Proprietary Club	3	9.2	7.3	127			
Registered Club	11	33.8	28.2	120			
Restaurant	6	18.4	32.1	57			
Residential	0	0.0	2.7	0			

Name	Description	License Type	Owner Name	Postcode
San Rocco	San Rocco	Restaurant	San Rocco	OL 6 6QW
Warrington Arms	Admiral Taverns Ltd	Pubs & Full On	Admiral Taverns Ltd	OL 6 6QR
White Horse	Star Pubs & Bars	Pubs & Full On	Star Pubs & Bars	OL 6 6QW
Sycamore Inn	Robinsons	Pubs & Full On	Robinsons	OL 6 6QX
Cheshire Cheese	Robinsons	Pubs & Full On	Robinsons	SK14 4BH
Newton Ward Conservative Club	Independent Free	Registered Club	Independent Free	SK14 4BH
King William Iv	Stonegate Pub Company	Pubs & Full On	Stonegate Pub Company	SK14 4HJ
George & Dragon	Star Pubs & Bars	Pubs & Full On	Star Pubs & Bars	SK14 4TQ
Bulls Head	Ei Group	Pubs & Full On	Ei Group	SK14 4SQ
Ridgehill Working Mens Club	Independent Free	Registered Club	Independent Free	SK15 1NF
Wharf Tavern	Independent Free	Pubs & Full On	Independent Free	SK15 1PD
Legendz	Unknown	Pubs & Full On	Unknown	SK15 1RR
Astley Arms	Red Oak Taverns	Pubs & Full On	Red Oak Taverns	SK15 1TF
Cosmos Bingo & Social Club	Independent Free	Proprietary Club	Independent Free	SK15 2AB
White House	Hydes Anvil	Pubs & Full On	Hydes Anvil	SK15 2AG
Khaleasi	Independent Free	Proprietary Club	Independent Free	SK15 2AJ
Q Inn	Hydes Anvil	Pubs & Full On	Hydes Anvil	SK15 2AL
Old Fleece	*Other Small Retail Groups	Pubs & Full On	*Other Small Retail Groups	SK15 2AL
Old Thirteenth Cheshire Astley Voluntee	Independent Free	Pubs & Full On	Independent Free	SK15 2AL
Station Buffet Bar	Independent Free	Pubs & Full On	Independent Free	SK15 1RF
Lord Stamford	Amber Taverns	Pubs & Full On	Amber Taverns	SK15 2DX
British Protection	Marston's	Pubs & Full On	Marston's	SK15 2HB
Staleyward No2 Conservative Club	Independent Free	Registered Club	Independent Free	SK15 2JL
St Peters Social Club	Independent Free	Registered Club	Independent Free	SK15 2JL
Wheatsheaf Inn	Marston's	Pubs & Full On	Marston's	SK16 4AJ
Astley Arms	Robinsons	Pubs & Full On	Robinsons	SK16 4BT
Dukinfield Masonic Club	Independent Free	Registered Club	Independent Free	SK16 4EN
Commercial	Admiral Taverns Ltd	Pubs & Full On	Admiral Taverns Ltd	SK16 4JU
Dukinfield Cricket Club	Independent Free	Registered Club	Independent Free	SK16 4LP
Angel Inn	*Other Small Retail Groups	Pubs & Full On	*Other Small Retail Groups	SK16 4TH
Dukinfield Rugby Club	Independent Free	Registered Club	Independent Free	SK16 5AP
Dukinfield Golf Club	Independent Free	Registered Club	Independent Free	SK16 5GF
Forester	Star Pubs & Bars	Pubs & Full On	Star Pubs & Bars	SK16 5EW
Stalybridge & Dukinfield Bowling Club	Independent Free	Registered Club	Independent Free	SK16 5JP
Lodge Hotel	Admiral Taverns Ltd	Pubs & Full On	Admiral Taverns Ltd	SK16 5JY
Tame Valley Hotel	Independent Free	Pubs & Full On	Independent Free	SK16 5LX
Masons Arms	Independent Free	Pubs & Full On	Independent Free	SK16 5NT
Albion Hotel	Robinsons	Pubs & Full On	Robinsons	SK16 4BZ
Ashton Cricket Bowling Club	Independent Free	Registered Club	Independent Free	OL 6 6RU
Bridge Inn	Dukedom Ltd	Pubs & Full On	Dukedom Ltd	SK16 2AH
Dukinfield Town Hall	Independent Free	Pubs & Full On	Independent Free	SK16 4LA
Herb & Spice	Independent Free	Restaurant	Independent Free	SK16 5PN
Society Rooms	Wetherspoons GB	Pubs & Full On	Wetherspoons GB	SK15 2JN
Judges Bar	Independent Free	Pubs & Full On	Independent Free	SK15 2JE
Bohemian Lounge	Independent Free	Pubs & Full On	Independent Free	SK15 2JN
Zeros	Independent Free	Pubs & Full On	Independent Free	SK15 2AA
Staly Vegas Pool Bar & Snooker Club	Independent Free	Proprietary Club	Independent Free	SK15 2JN
Sykes	Independent Free	Pubs & Full On	Independent Free	SK15 2AB
Phoenix City	Independent Free	Restaurant	Independent Free	SK15 1NX
Vevas Indo Bistro	Independent Free	Restaurant	Independent Free	SK15 1NX
Back To The 80's	Independent Free	Pubs & Full On	Independent Free	SK15 2AA
Bridge Beers	Independent Free	Pubs & Full On	Independent Free	SK15 2JJ
Crafty Pint	Independent Free	Pubs & Full On	Independent Free	SK15 2JJ

# CGA LICENCED PREMISES

© 2024 CACI Limited and all other applicable third party notices (CGA) can be found at [www.caci.co.uk/copyrightnotices.pdf](http://www.caci.co.uk/copyrightnotices.pdf)

Area: P03968\_Lodge, Dukinfield, SK16 5JY (1 Mile  
 Base: Great Britain  
 Year: 2023

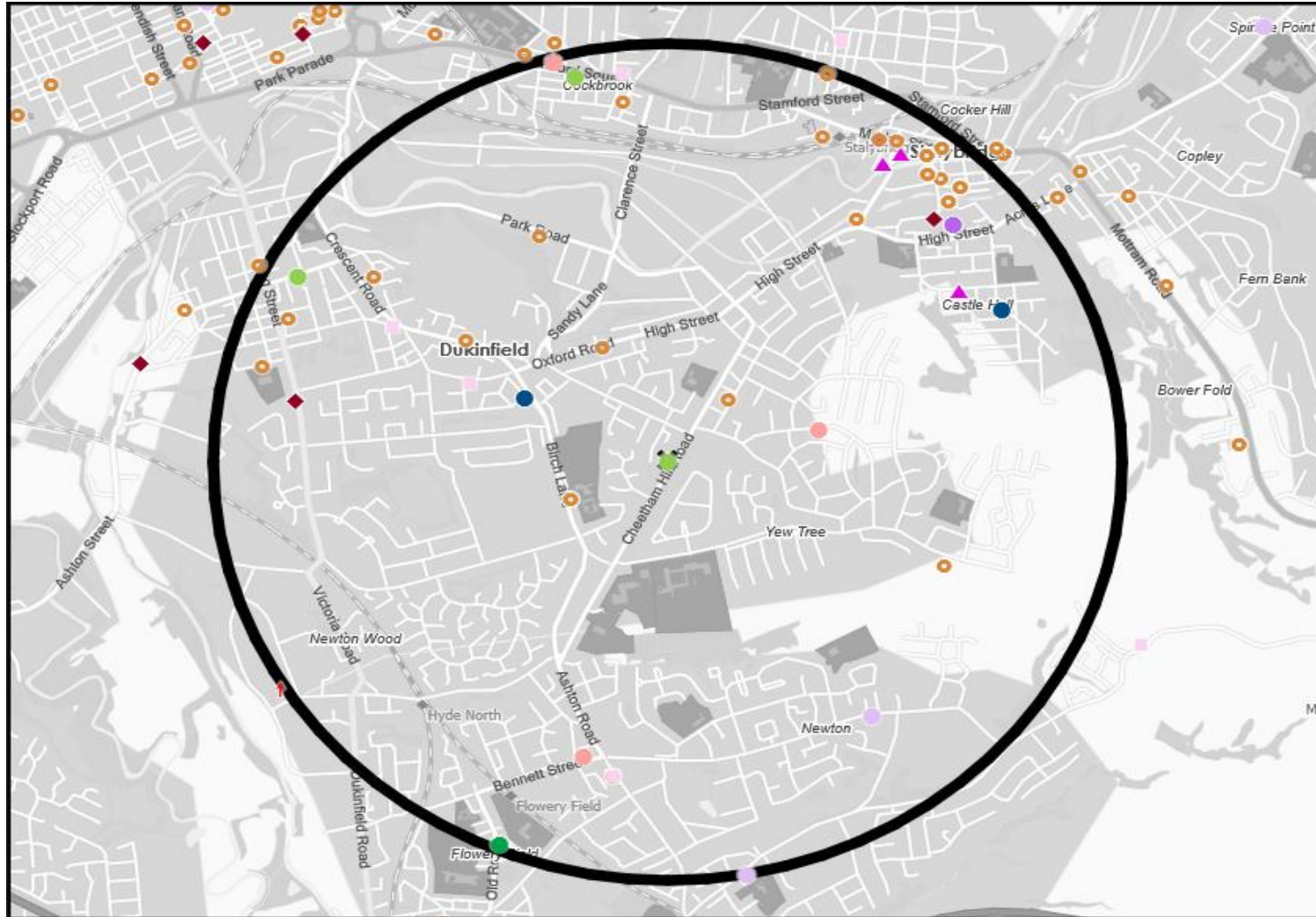
Licence Type	Profile	Per 1000 Pop (Area)	Per 1000 Pop (Base)	Index	0	100	200
Pubs & Full On	37	113.7	81.7	<b>139</b>			
Proprietary Club	3	9.2	7.3	<b>127</b>			
Registered Club	11	33.8	28.2	<b>120</b>			
Restaurant	6	18.4	32.1	57			
Residential	0	0.0	2.7	0			

Name	Description	License Type	Owner Name	Postcode
Deli Felice	Independent Free	Restaurant	Independent Free	SK15 2AA
Dukinfield Town Football Club	Independent Free	Registered Club	Independent Free	SK16 5AP
Florence & Amelia's	Independent Free	Pubs & Full On	Independent Free	SK15 2JL
Gladstone Barber & Bistro	Independent Free	Restaurant	Independent Free	SK15 1NX

# MAP OF AREA

© 2024 CACI Limited and all other applicable third party notices (CGA) can be found at [www.caci.co.uk/copyrightnotices.pdf](http://www.caci.co.uk/copyrightnotices.pdf)  
 Source: OS Open Data 2018

Area: P03968\_Lodge, Dukinfield, SK16 5JY (1 Mile contour)



**KEY**

- Large pub co's & bars
  - Admiral Taverns Ltd
  - Ei Group
  - Greene King
  - Marston's
  - Mitchells & Butlers
  - Punch Pub Company
  - Stonegate Pub Company
  - Star Pubs & Bars
  - Wetherspoon
  - Whitbread
  - Shepherd Neame
- Small to medium pub co's & bars
- Family Brewers with pubs
- Hotels
- Restaurants
- Leisure
- Independent
- Other
- Site Location
- Boundary

## ACORN CATEGORY PROFILE - HOUSEHOLDS

© 2024 CACI Limited and all other applicable third party notices (Acorn) can be found at [www.caci.co.uk/copyrightnotices.pdf](http://www.caci.co.uk/copyrightnotices.pdf)

**Area:** P03968\_Lodge, Dukinfield, SK16 5JY (1 Mile contour)  
**Base:** Great Britain  
**Year:** 2023

Acorn Category Description	Area Profile	% for Area	% for Base	Index 0	100	200
1 Affluent Achievers	844	5.9	22.1	27		
2 Rising Prosperity	232	1.6	10.2	16		
3 Comfortable Communities	3,624	25.3	26.5	95		
4 Financially Stretched	4,857	33.9	23.7	143		
5 Urban Adversity	4,781	33.3	17.2	194		
6 Not Private Households	2	0.0	0.3	4		
<b>Total households</b>		<b>14,340</b>				

### Acorn Category Pen Portrait

## 5 Urban Adversity

Age range

25-34

House type

Flat or terraced

8.4M UK Adults

15.9%

of UK

Financial situation

Running into debt ← → Saving a lot

House tenure

Social renting

Children at home

3+

Number of beds

1-2

This category contains the most deprived areas of towns and cities across the UK. Household incomes are low, nearly always below the national average.

Acorn Groups within Category 5: Urban Adversity

- O Young Hardship 32%
- P Struggling Estates 41%
- Q Difficult Circumstances 27%

ACORN GROUP PROFILE - HOUSEHOLDS

© 2024 CACI Limited and all other applicable third party notices (Acorn) can be found at www.caci.co.uk/copyrightnotices.pdf

Area: P03968\_Lodge, Dukinfield, SK16 5JY (1 Mile contour)  
 Base: Great Britain  
 Year: 2023

Acorn Group Description	Area Profile	% for Area	% for Base	Index	0	100	200
<b>1. Affluent Achievers</b>							
1.A Lavish Lifestyles	0	0.0	1.1	0			
1.B Executive Wealth	367	2.6	11.3	23			
1.C Mature Money	477	3.3	9.6	34			
<b>2. Rising Prosperity</b>							
2.D City Sophisticates	0	0.0	3.8	0			
2.E Career Climbers	232	1.6	6.4	25			
<b>3. Comfortable Communities</b>							
3.F Countryside Communities	0	0.0	5.7	0			
3.G Successful Suburbs	499	3.5	6.0	58			
3.H Steady Neighbourhoods	1,773	12.4	7.4	167			
3.I Comfortable Seniors	256	1.8	2.9	62			
3.J Starting Out	1,096	7.6	4.6	168			
<b>4. Financially Stretched</b>							
4.K Student Life	0	0.0	2.5	0			
4.L Modest Means	2,239	15.6	8.0	196			
4.M Striving Families	1,147	8.0	7.4	107			
4.N Poorer Pensioners	1,471	10.3	5.8	178			
<b>5. Urban Adversity</b>							
5.O Young Hardship	1,983	13.8	6.3	221			
5.P Struggling Estates	1,029	7.2	5.7	126			
5.Q Difficult Circumstances	1,769	12.3	5.2	235			
<b>6. Not Private Households</b>							
6.R Not Private Households	2	0.0	0.3	4			
<b>Total households</b>	<b>14,340</b>						

Acorn Group Pen Portrait

**6 Not Private Households** 790k UK Adults    1.5% of UK

These are postcodes where the bulk of the residents are not living in private households.

The category forms a single group, R: Not private households, which is sub-divided into three types:

**60 Active communal population –**  
 Generally this is accommodation that may be unoccupied for part of the year, or where the people living in the accommodation regularly change. Other active communal accommodation might include hostels, children's homes, refuges and local authority accommodation for travellers.

**61 Inactive communal population –**  
 These people may be in communal establishments but unlikely to be active consumers. This includes care homes, hospitals, and other medical or nursing establishments where due to their health, the residents are unlikely to get out and about to function as regular consumers. It also includes prisons.

**62 Business areas without resident population –**  
 These are postcodes where we believe there is no regular resident population. An example of this might be a business or industrial park.



CATEGORY	GROUP	TYPE	MAP	WHAT IS ACORN?
----------	-------	------	-----	----------------

### ACORN TYPE PROFILE - HOUSEHOLDS

© 2024 CACI Limited and all other applicable third party notices (Acorn) can be found at [www.caci.co.uk/copyrightnotices.pdf](http://www.caci.co.uk/copyrightnotices.pdf)

Area: P03968\_Lodge, Dukinfield, SK16 5JY (1 Mile contour)  
 Base: Great Britain  
 Year: 2023

Sort by:  Corn Structure  
 Index  
 Profile %

Acorn Type Description	Area Profile	% for Area	% for Base	Index	0	100	200
<b>1. Affluent Achievers</b>							
<b>1.A Lavish Lifestyles</b>							
1.A.1 Exclusive enclaves	0	0.0	0.1	0			
1.A.2 Metropolitan money	0	0.0	0.1	0			
1.A.3 Large house luxury	0	0.0	0.9	0			
<b>1.B Executive Wealth</b>							
1.B.4 Asset rich families	0	0.0	2.6	0			
1.B.5 Wealthy countryside commuters	0	0.0	2.5	0			
1.B.6 Financially comfortable families	306	2.1	2.2	96			
1.B.7 Affluent professionals	0	0.0	0.9	0			
1.B.8 Prosperous suburban families	0	0.0	1.5	0			
1.B.9 Well-off edge of towners	61	0.4	1.6	26			
<b>1.C Mature Money</b>							
1.C.10 Better-off villagers	0	0.0	3.1	0			
1.C.11 Settled suburbia, older people	390	2.7	2.8	97			
1.C.12 Retired and empty nesters	87	0.6	2.5	25			
1.C.13 Upmarket downsizers	0	0.0	1.3	0			
<b>2. Rising Prosperity</b>							
<b>2.D City Sophisticates</b>							
2.D.14 Townhouse cosmopolitans	0	0.0	0.7	0			
2.D.15 Younger professionals in smaller flats	0	0.0	1.5	0			
2.D.16 Metropolitan professionals	0	0.0	0.7	0			
2.D.17 Socialising young renters	0	0.0	1.0	0			
<b>2.E Career Climbers</b>							
2.E.18 Career driven young families	121	0.8	2.0	43			
2.E.19 First time buyers in small, modern homes	111	0.8	3.4	23			
2.E.20 Mixed metropolitan areas	0	0.0	1.0	0			
<b>3. Comfortable Communities</b>							
<b>3.F Countryside Communities</b>							
3.F.21 Farms and cottages	0	0.0	1.5	0			
3.F.22 Older couples and families in rural areas	0	0.0	1.0	0			
3.F.23 Owner occupiers in small towns and villages	0	0.0	3.2	0			
<b>3.G Successful Suburbs</b>							
3.G.24 Comfortably-off families in modern housing	422	2.9	2.7	109			
3.G.25 Larger family homes, multi-ethnic areas	0	0.0	0.8	0			
3.G.26 Semi-professional families, owner occupied neighbourhoods	77	0.5	2.4	22			
<b>3.H Steady Neighbourhoods</b>							
3.H.27 Suburban semis, conventional attitudes	1,143	8.0	3.5	230			
3.H.28 Owner occupied terraces, average income	31	0.2	1.6	13			
3.H.29 Established suburbs, older families	599	4.2	2.3	179			
<b>3.I Comfortable Seniors</b>							
3.I.30 Older people, neat and tidy neighbourhoods	256	1.8	2.4	75			
3.I.31 Elderly singles in purpose-built accommodation	0	0.0	0.5	0			
<b>3.J Starting Out</b>							
3.J.32 Educated families in terraces, young children	477	3.3	2.2	155			
3.J.33 Smaller houses and starter homes	619	4.3	2.4	180			
<b>4. Financially Stretched</b>							
<b>4.K Student Life</b>							
4.K.34 Student flats and halls of residence	0	0.0	0.3	0			
4.K.35 Term-time terraces	0	0.0	0.2	0			
4.K.36 Educated young people in flats and tenements	0	0.0	1.9	0			
<b>4.L Modest Means</b>							
4.L.37 Low cost flats in suburban areas	186	1.3	1.4	90			
4.L.38 Semi-skilled workers in traditional neighbourhoods	686	4.8	2.6	182			
4.L.39 Fading owner occupied terraces	1,367	9.5	2.9	327			
4.L.40 High occupancy terraces, culturally diverse family areas	0	0.0	1.0	0			
<b>4.M Striving Families</b>							
4.M.41 Labouring semi-rural estates	0	0.0	1.6	0			
4.M.42 Struggling young families in post-war terraces	108	0.8	1.6	46			
4.M.43 Families in right-to-buy estates	467	3.3	2.0	160			
4.M.44 Post-war estates, limited means	572	4.0	2.2	183			
<b>4.N Poorer Pensioners</b>							
4.N.45 Pensioners in social housing, semis and terraces	58	0.4	0.8	51			
4.N.46 Elderly people in social rented flats	189	1.3	1.0	128			
4.N.47 Low income older people in smaller semis	378	2.6	2.2	118			
4.N.48 Pensioners and singles in social rented flats	846	5.9	1.7	346			
<b>5. Urban Adversity</b>							
<b>5.O Young Hardship</b>							
5.O.49 Young families in low cost private flats	206	1.4	2.2	66			
5.O.50 Struggling younger people in mixed tenure	398	2.8	1.8	154			
5.O.51 Young people in small, low cost terraces	1,379	9.6	2.3	425			
<b>5.P Struggling Estates</b>							
5.P.52 Poorer families, many children, terraced housing	539	3.8	1.6	241			
5.P.53 Low income terraces	0	0.0	0.8	0			
5.P.54 Multi-ethnic, purpose-built estates	0	0.0	1.0	0			
5.P.55 Deprived and ethnically diverse in flats	0	0.0	0.7	0			
5.P.56 Low income large families in social rented semis	490	3.4	1.6	214			
<b>5.Q Difficult Circumstances</b>							
5.Q.57 Social rented flats, families and single parents	203	1.4	1.5	94			
5.Q.58 Singles and young families, some receiving benefits	442	3.1	1.8	175			
5.Q.59 Deprived areas and high-rise flats	1,124	7.8	2.0	398			
<b>6. Not Private Households</b>							
<b>6.R Not Private Households</b>							
6.R.60 Active communal population	0	0.0	0.1	0			
6.R.61 Inactive communal population	2	0.0	0.3	5			
6.R.62 Business areas without resident population	0	0	0	0			
<b>Total households</b>	<b>14,340</b>						

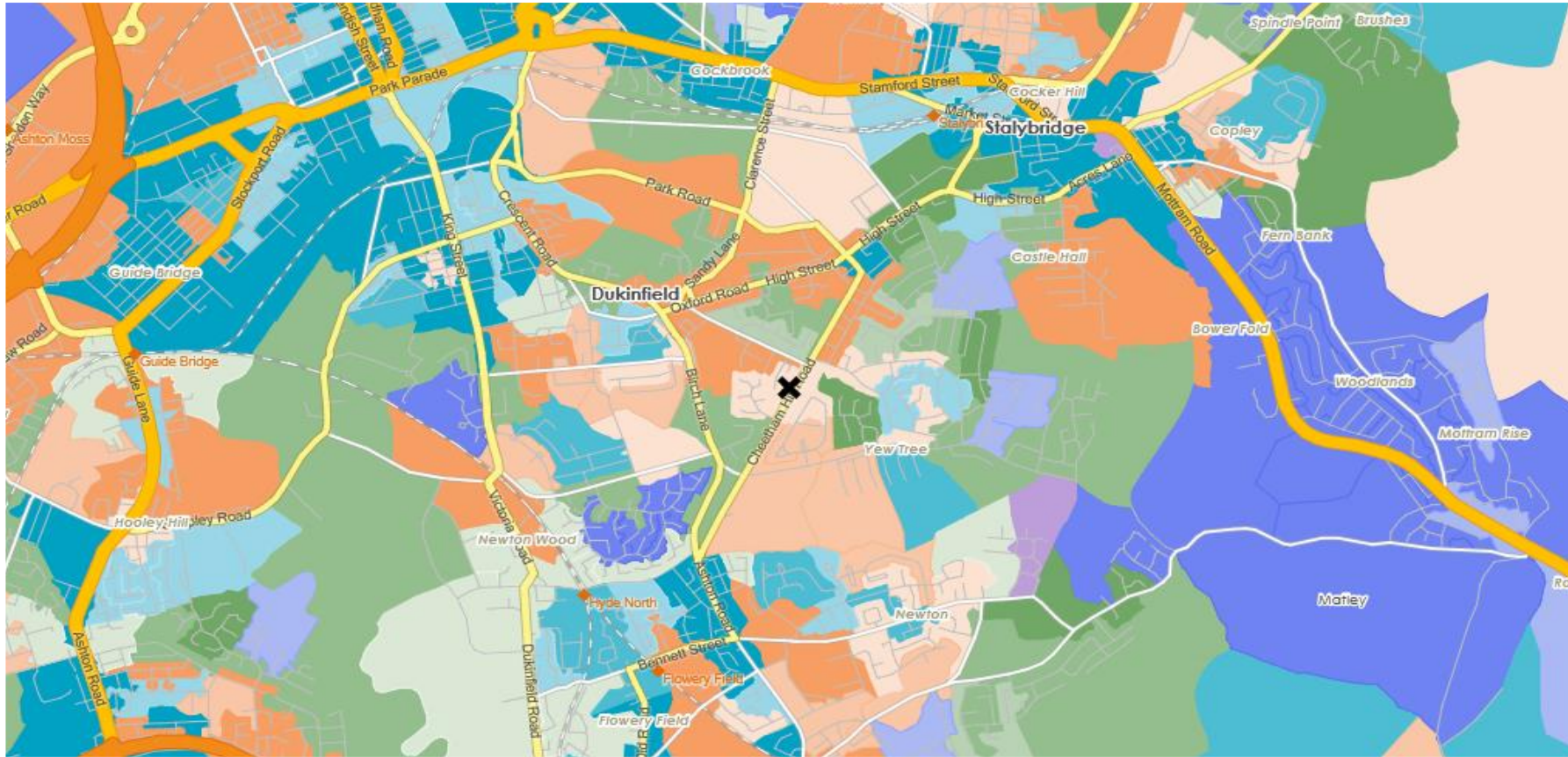
CATEGORY      GROUP      TYPE      **MAP**      WHAT IS ACORN?

# DOMINANT ACORN GROUP - HOUSEHOLDS

© 2024 CACI Limited and all other applicable third party notices (Acorn) can be found at [www.caci.co.uk/copyrightnotices.pdf](http://www.caci.co.uk/copyrightnotices.pdf)

Source: OS Open Data 2018

Area: P03968\_Lodge, Dukinfield, SK16 5JY (1 Mile contour)



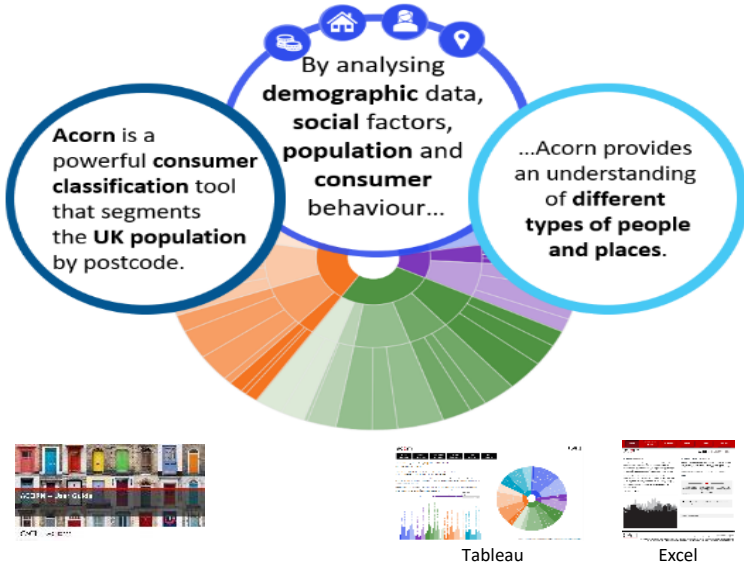
- Dominant Acorn Category
- % Affluent Achievers
- % Rising Prosperity
- % Comfortable Communities
- % Financially Stretched
- % Urban Adversity
- Dominant Acorn Group

- Acorn Groups**
- 1.A Lavish Lifestyles
  - 1.B Executive Wealth
  - 1.C Mature Money
  - 2.D City Sophisticates
  - 2.E Career Climbers
  - 3.F Countryside Communities
  - 3.G Successful Suburbs
  - 3.H Steady Neighbourhoods
  - 3.I Comfortable Seniors
  - 3.J Starting Out
  - 4.K Student Life
  - 4.L Modest Means
  - 4.M Striving Families
  - 4.N Poorer Pensioners
  - 5.O Young Hardship
  - 5.P Struggling Estates
  - 5.Q Difficult Circumstances
  - 6.R Not Private Households

Area boundary

ACORN - WHAT IS IT?

© 2024 CACI Limited and all other applicable third party notices (Acorn) can be found at [www.caci.co.uk/copyrightnotices.pdf](http://www.caci.co.uk/copyrightnotices.pdf)



6 CATEGORIES      18 GROUPS      62 TYPES

1. Affluent Achievers	A. Lavish Lifestyles	1-3
	B. Executive Wealth	4-9
	C. Mature Money	10-13
2. Rising Prosperity	D. City Sophisticates	14-17
	E. Career Climbers	18-20
	F. Countryside Communities	21-23
	G. Successful Suburbs	24-26
	H. Steady Neighbourhoods	27-29
	I. Comfortable Seniors	30-31
	J. Starting Out	32-33
3. Comfortable Communities	K. Student Life	34-36
	L. Modest Means	37-40
	M. Striving Families	41-44
	N. Poorer Pensioners	45-48
4. Financially Stretched	O. Young Hardship	49-51
	P. Struggling Estates	52-56
	Q. Difficult Circumstances	57-59
5. Urban Adversity	R. Not Private Households	60-62
6. Not Private Households		

**1 Affluent Achievers**

Age range: **55+**

Financial situation: Running into debt ↔ Saving a lot

Children at home: **0**

**12.1M** UK Adults

**22.8%** of UK

House type: **Detached**

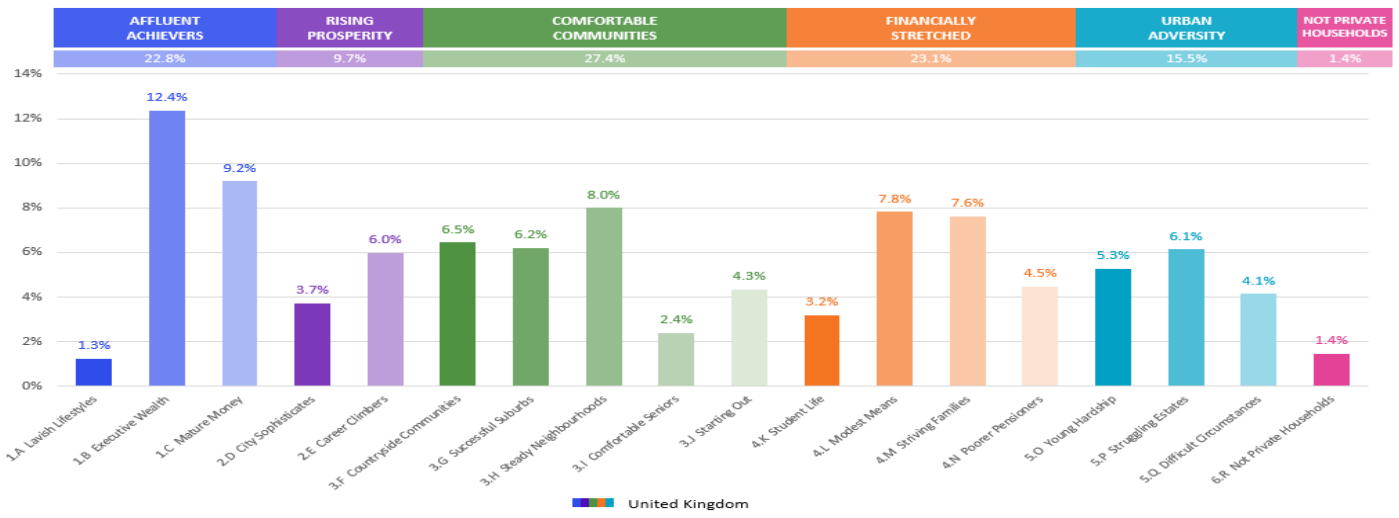
House tenure: **Owned outright**

Number of beds: **4+**

These are some of the most financially successful people in the UK. They live in affluent, high status areas of the country. They are healthy, wealthy and confident consumers.

Acorn Groups within Category 1: Affluent Achievers

- A. Lavish Lifestyles: 6%
- B. Executive Wealth: 54%
- C. Mature Money: 40%





# MAP OF AREA

© 2024 CACI Limited and all other applicable third party notices can be found at [www.caci.co.uk/copyrightnotices.pdf](http://www.caci.co.uk/copyrightnotices.pdf)

Source: OS Open Data 2018

Area: P03968\_Lodge, Dukinfield, SK16 5JY (1 Mile contour)

